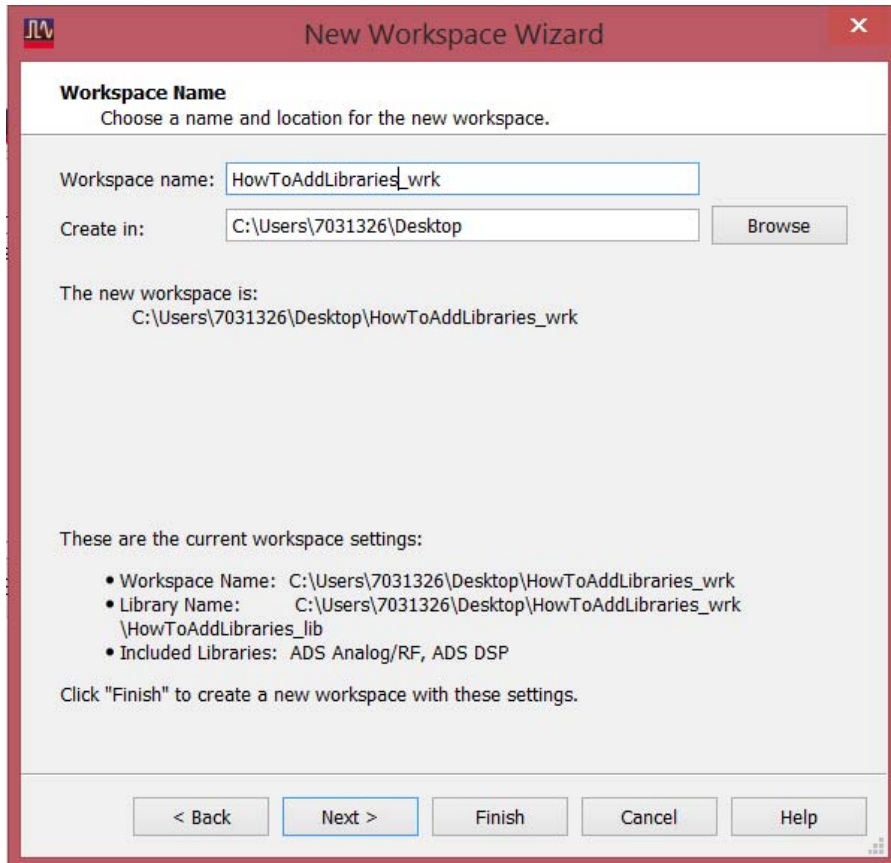
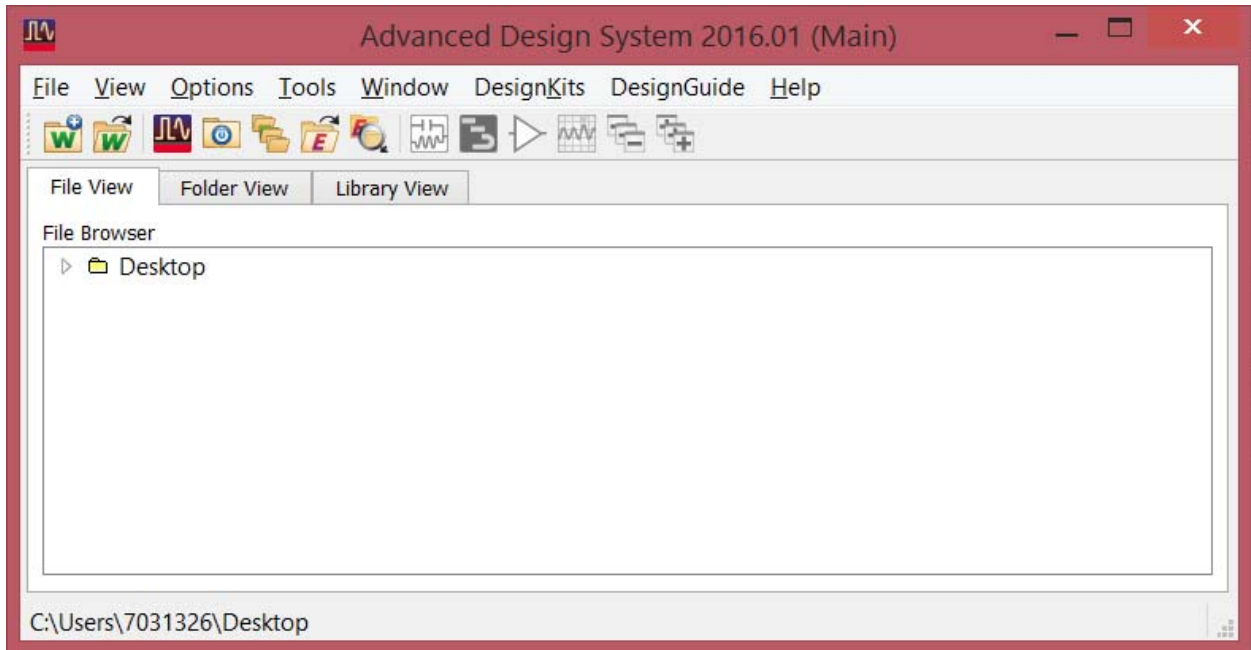


<http://edadocs.software.keysight.com/display/ads201601/Procedure+to+add+a+Vendor+Component+Library>



New Workspace Wizard

Add Libraries
Select the libraries to include in the workspace.

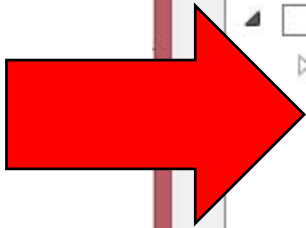
You can also change this selection after the workspace is created.

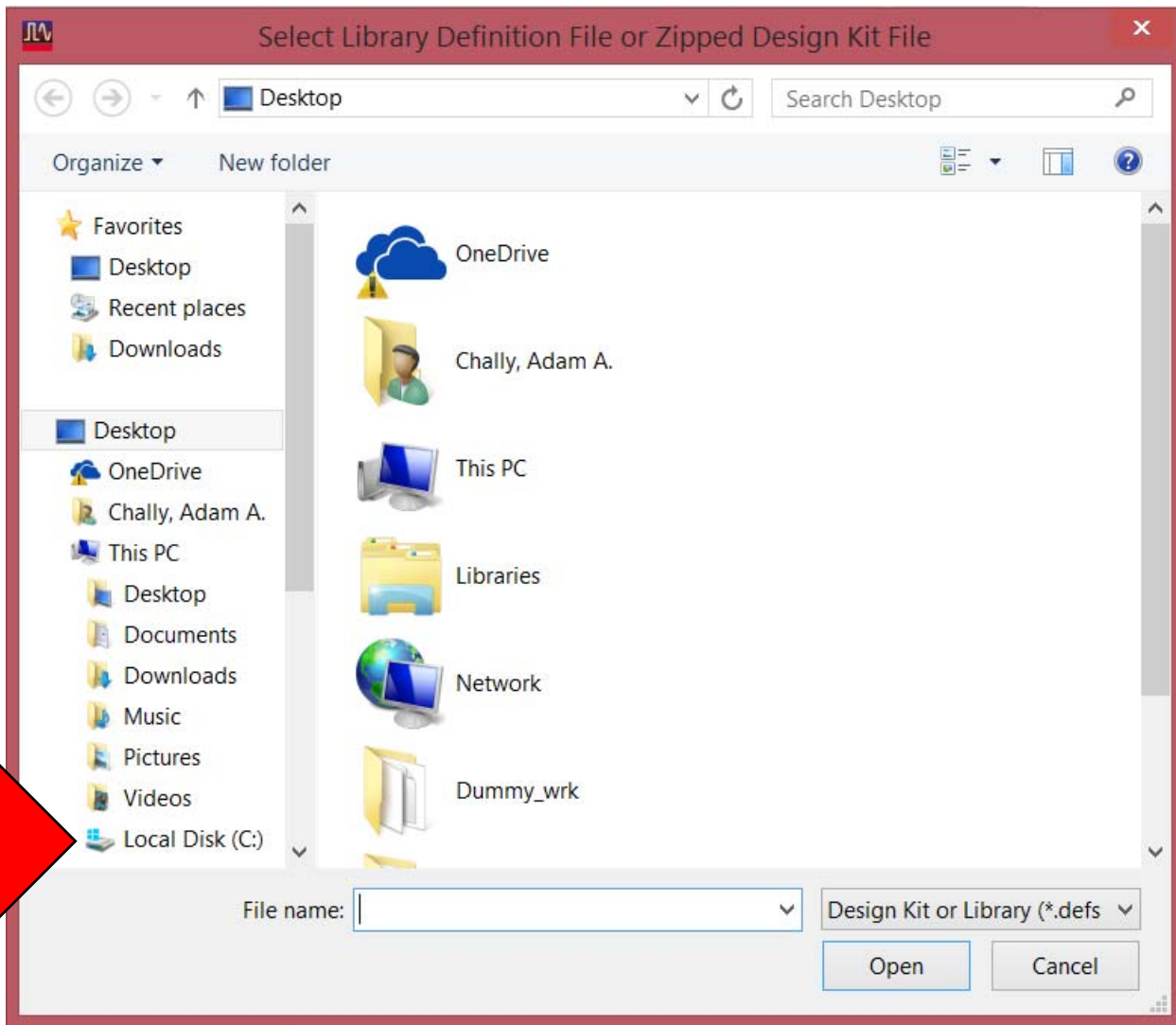
Note: A PDK is a type of library. All library management commands also apply to PDKs.

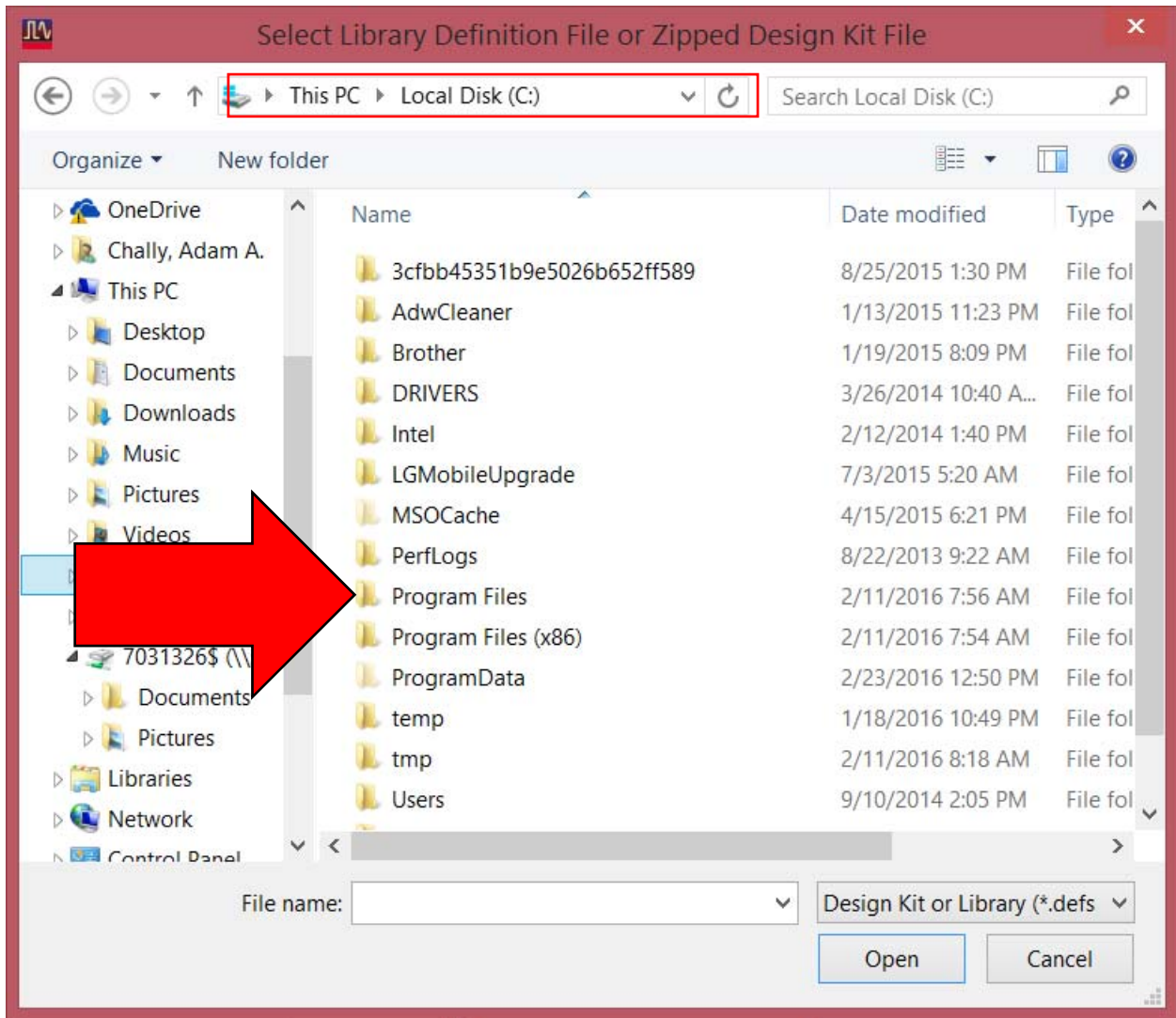
▲ <input checked="" type="checkbox"/> ADS Libraries	
▷ <input checked="" type="checkbox"/> Analog/RF	\$HPEESOF_DIR\oalibs\analog_rf.defs
▷ <input checked="" type="checkbox"/> DSP	\$HPEESOF_DIR\oalibs\dsp.defs
▲ <input type="checkbox"/> Site Libraries	
▷ <input type="checkbox"/> DemoKit	\$HPEESOF_DIR\examples\DesignKit...
▷ <input type="checkbox"/> DemoKit_Non_Linear	\$HPEESOF_DIR\examples\DesignKit...
▲ <input type="checkbox"/> User Favorite Libraries and PDKs	
▷ <input type="checkbox"/> Analog_Parts_vendor_kit	\$HOME\Downloads\Analog_Parts_v...
Add User Favorite Library/PDK...	

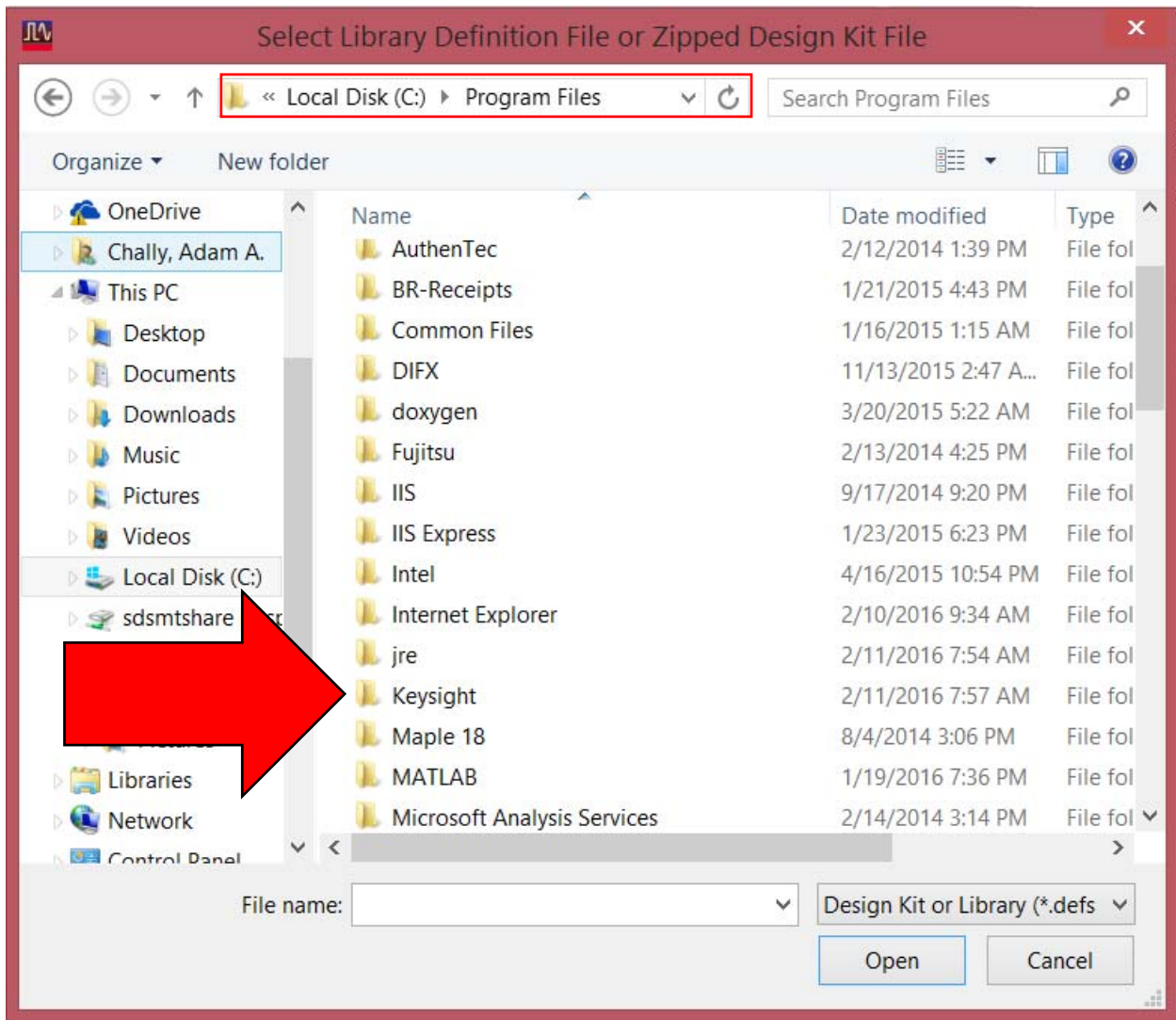
Save selected libraries as defaults.

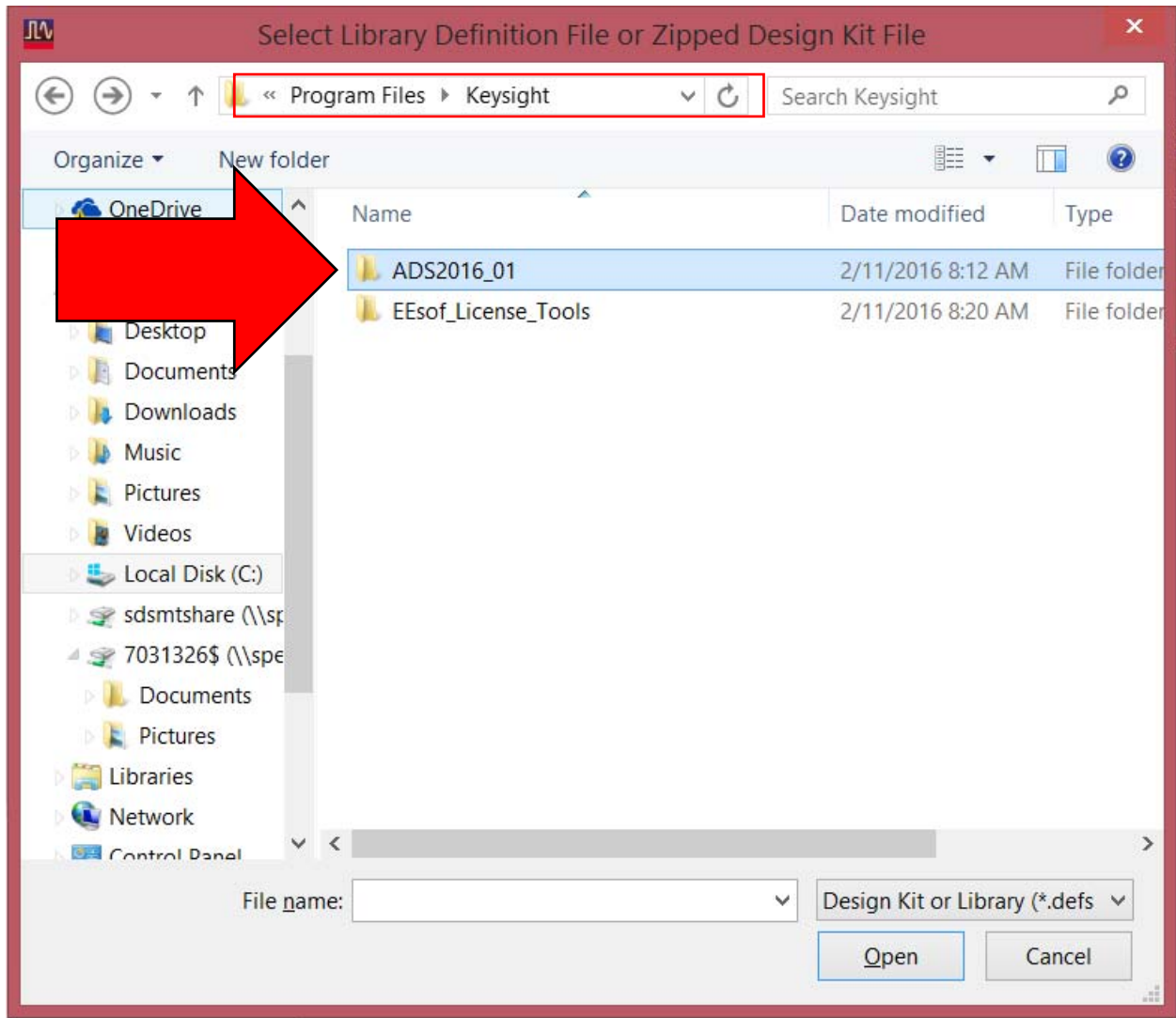
< Back Next > Finish Cancel Help

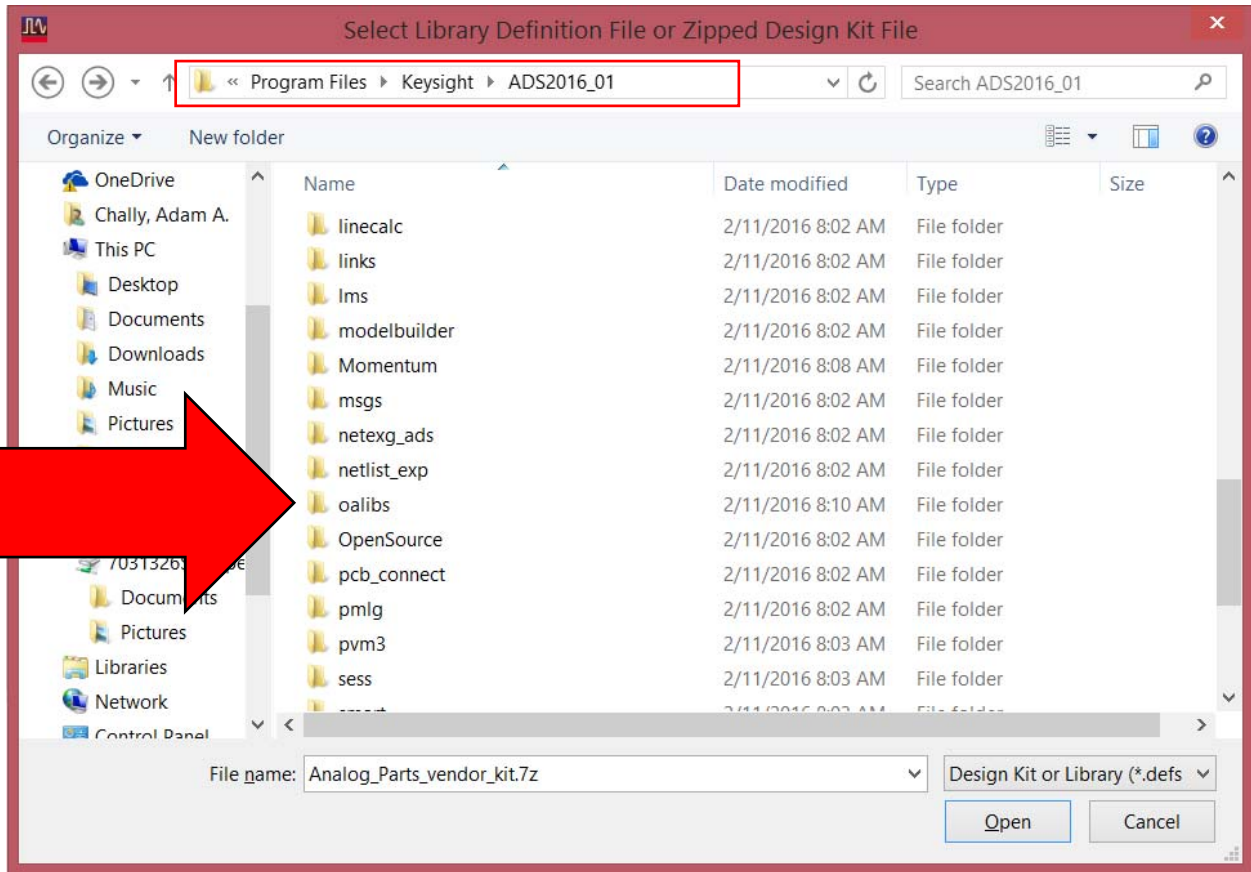


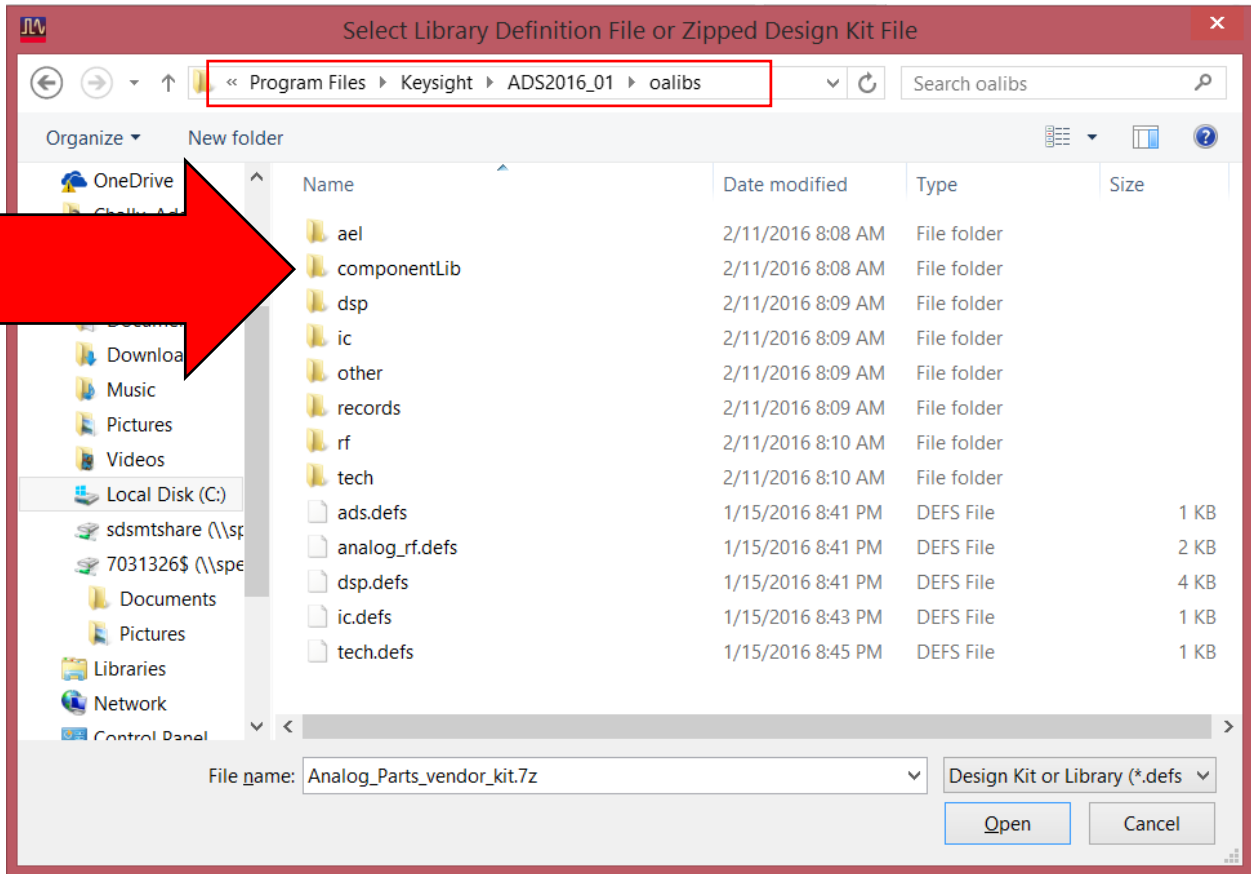


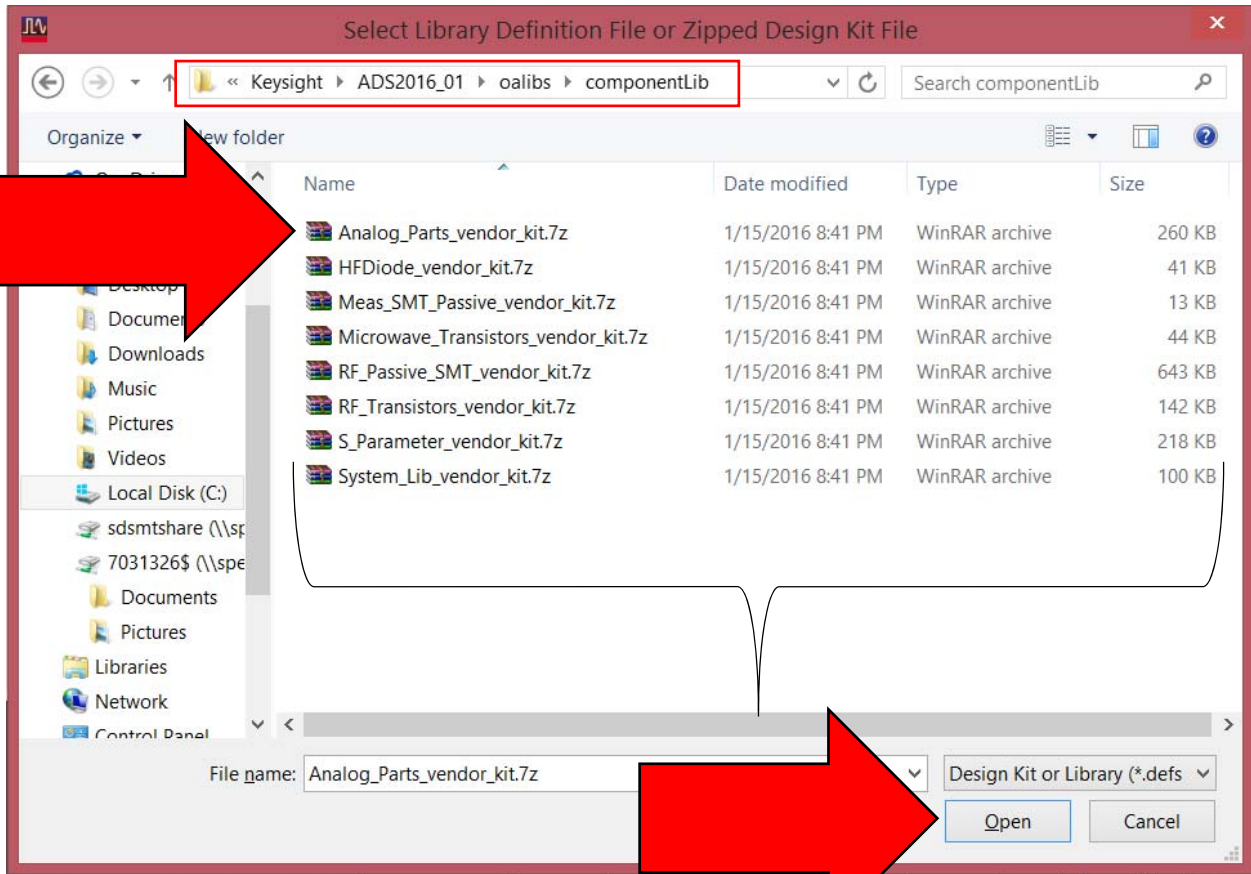


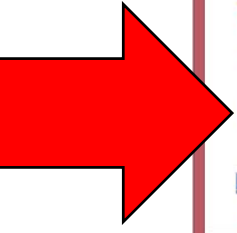












Select directory to unzip file

Chally, Adam A. Search Chally, Adam A.

Organize New folder

- Favorites
 - Desktop
 - Recent places
 - Downloads
- Desktop
- OneDrive
- Chally, Adam A.
- This PC
 - Desktop
 - Documents
 - Downloads
 - Music
 - Pictures
 - Videos
- Local Disk (C:)

.android .gstreamer-0.10 .maplesoft .ssh .VirtualBox AppData Contacts

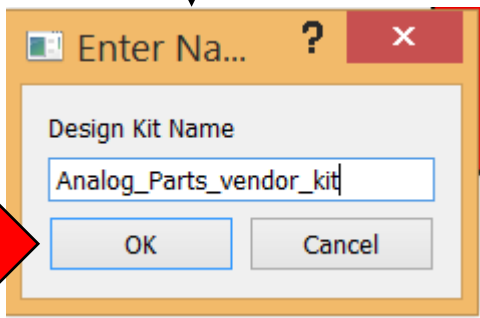
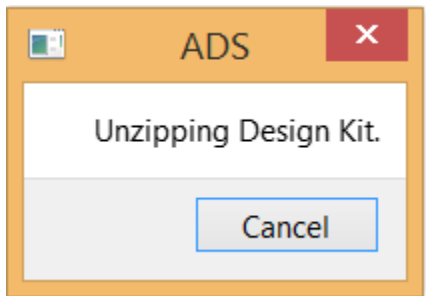
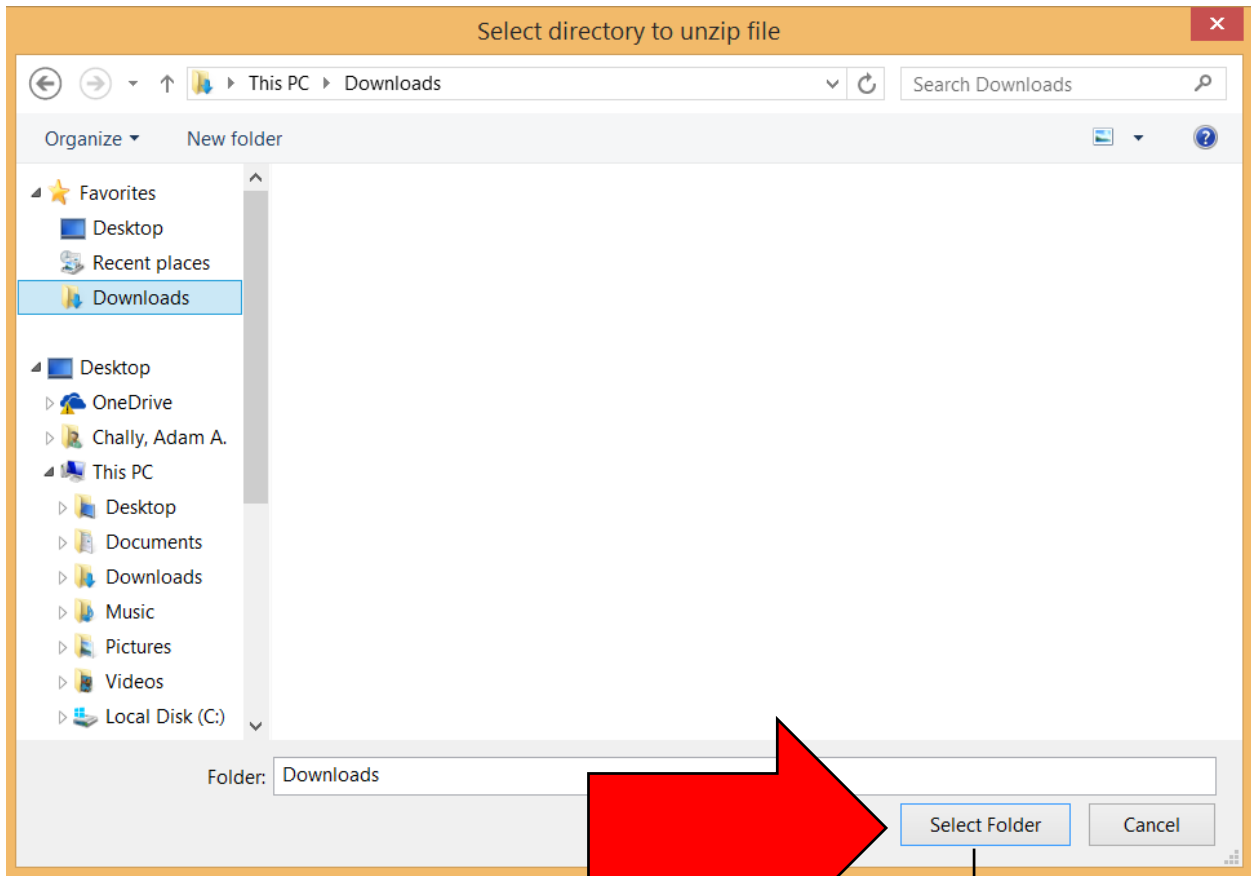
Desktop Documents Downloads Favorites hpeesof InstallAnyw here Links

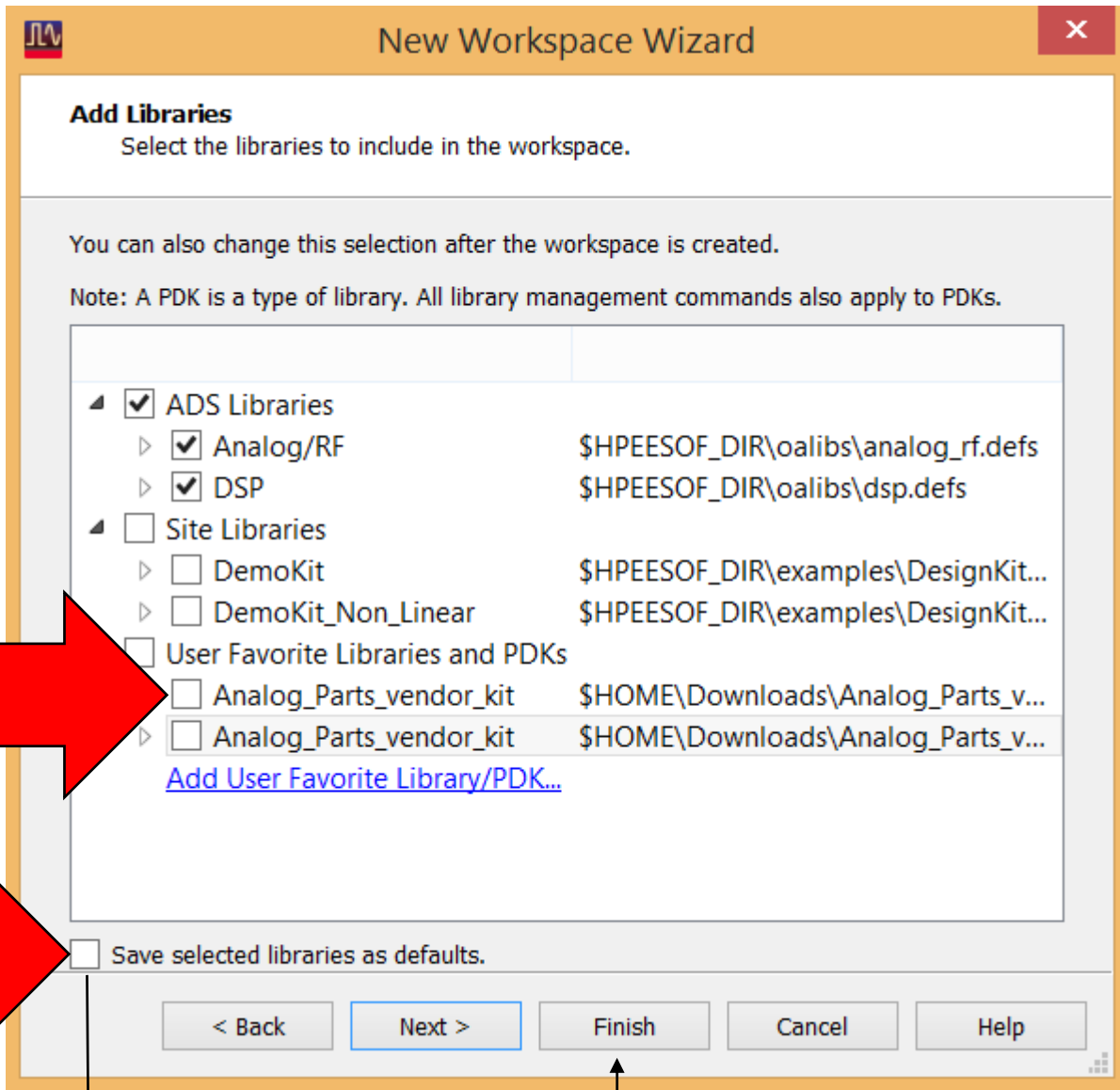
Music OneDrive Pictures Saved Games Searches Source Tracing

Videos VirtualBox VMs

Folder:

Select Folder Cancel





Add Libraries

Select the libraries to include in the workspace.

You can also change this selection after the workspace is created.

Note: A PDK is a type of library. All library management commands also apply to PDKs.

- ADS Libraries
 - Analog/RF \$HPEESOF_DIR\oalibs\analog_rf.defs
 - DSP \$HPEESOF_DIR\oalibs\dsp.defs
 - Site Libraries
 - DemoKit \$HPEESOF_DIR\examples\DesignKit...
 - DemoKit_Non_Linear \$HPEESOF_DIR\examples\DesignKit...
 - User Favorite Libraries and PDKs
 - Analog_Parts_vendor_kit \$HOME\Downloads\Analog_Parts_v...
 - Analog_Parts_vendor_kit \$HOME\Downloads\Analog_Parts_v...
- [Add User Favorite Library/PDK...](#)

Save selected libraries as defaults.

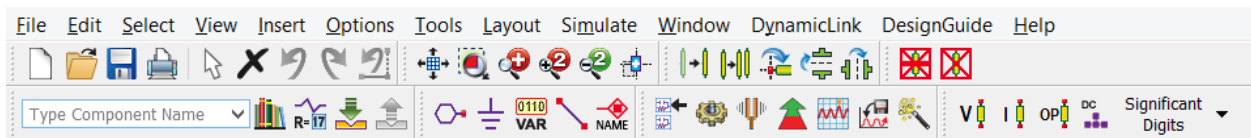
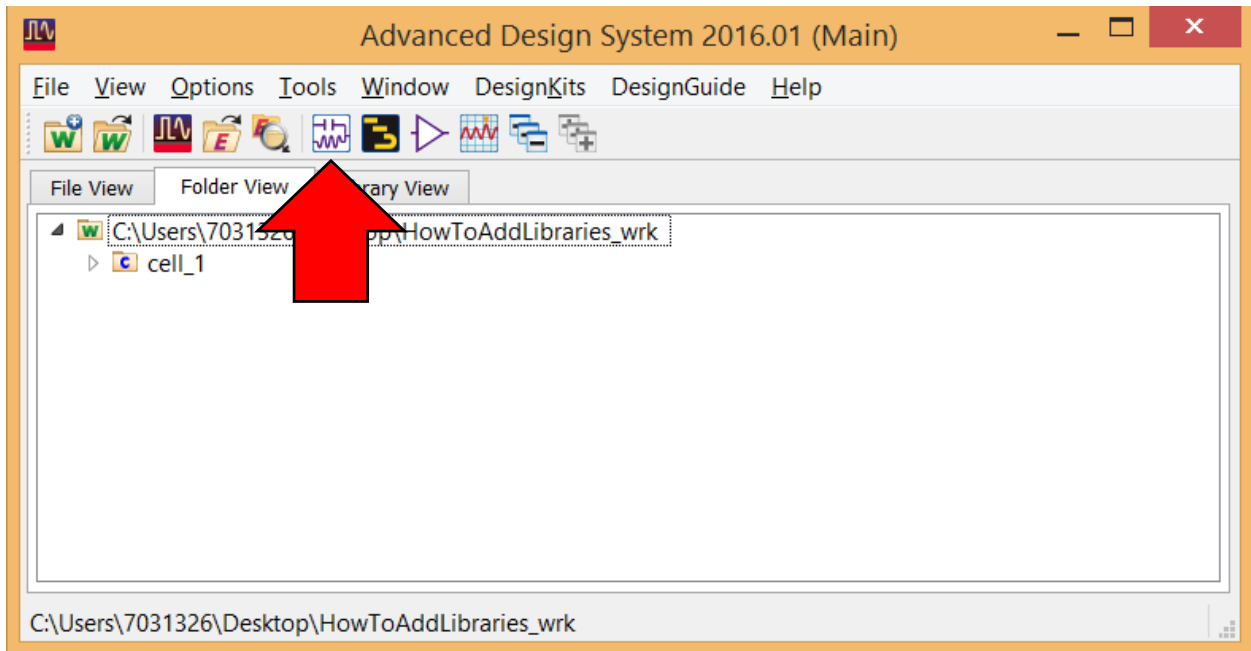
< Back

Next >

Finish

Cancel

Help



- ▲ All Libraries
 - ▷ Workspace Libraries
 - ▷ ADS Analog/RF Libraries
 - ▷ ADS DSP Libraries
 - ▲ Read-Only Libraries
 - ▷ Analog_Parts

2N	Component	Description	Library	Vendor	Placement	Availability	Search Uri	Search License
	ap_npn_2N4124_19930601	Basic Description: NPN Transistor, Part nu...	Analog_Parts	---	Both	Available	N/A	N/A
	ap_npn_Q2N4124_19930601	Manufacturer: National, Basic Description: ...	Analog_Parts	National	Both	Available	N/A	N/A
	ap_npn_2N1711_19930601	Basic Description: NPN Transistor, Part nu...	Analog_Parts	---	Both	Available	N/A	N/A
	ap_npn_2N1893_19930601	Basic Description: NPN Transistor, Part nu...	Analog_Parts	---	Both	Available	N/A	N/A
	ap_npn_2N2060_19930601	Manufacturer: Motorola, Basic Description:...	Analog_Parts	Motorola	Both	Available	N/A	N/A
	ap_npn_2N2060A_19930601	Manufacturer: Motorola, Basic Description:...	Analog_Parts	Motorola	Both	Available	N/A	N/A
	ap_npn_2N2102_19930601	Manufacturer: Motorola, Basic Description:...	Analog_Parts	Motorola	Both	Available	N/A	N/A
	ap_npn_2N2219_19930601	Manufacturer: Motorola, Basic Description:...	Analog_Parts	Motorola	Both	Available	N/A	N/A
	ap_npn_2N2219A_19930601	Basic Description: NPN Transistor, Part nu...	Analog_Parts	---	Both	Available	N/A	N/A
	ap_npn_2N2222_19930601	Manufacturer: Motorola, Basic Description:...	Analog_Parts	Motorola	Both	Available	N/A	N/A
	ap_npn_2N2222A_19930601	Manufacturer: Motorola, Basic Description:...	Analog_Parts	Motorola	Both	Available	N/A	N/A

Right click and select “Place Component”. Then, exit that Component Library window and place your new component in the Schematic/Circuit window.

And congratulations, you did it.